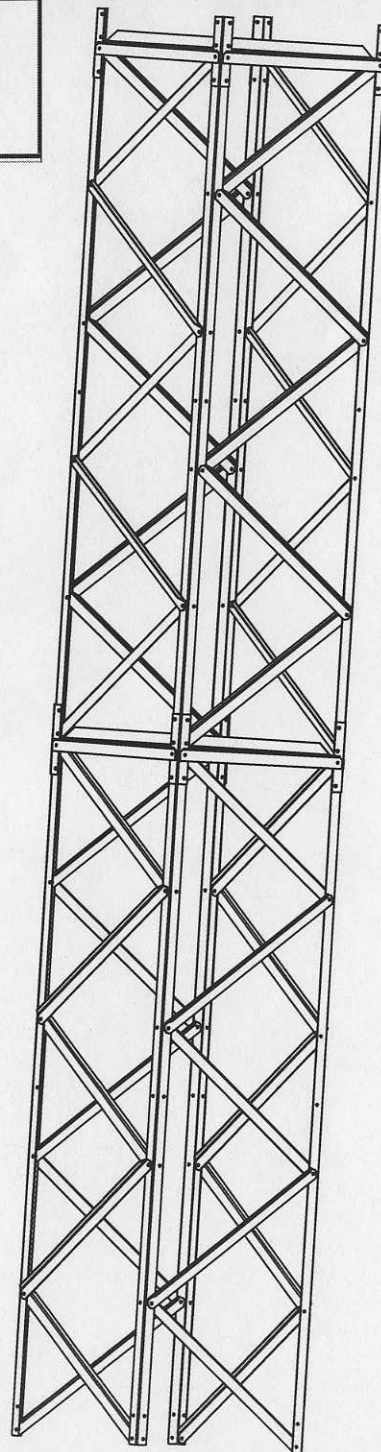


**GREENE**  
**GALVANIZED**  
**STAIRS**  
 www.greenebinstairs.com

**GREENE**  
 Welding & Hdw., Inc.  
 41774 Main St.  
 Box 191 • East Lynn, IL 60932  
 217-375-4244 • Fax: 217-375-4245



20' T36362 36 x 36 single brace Tower

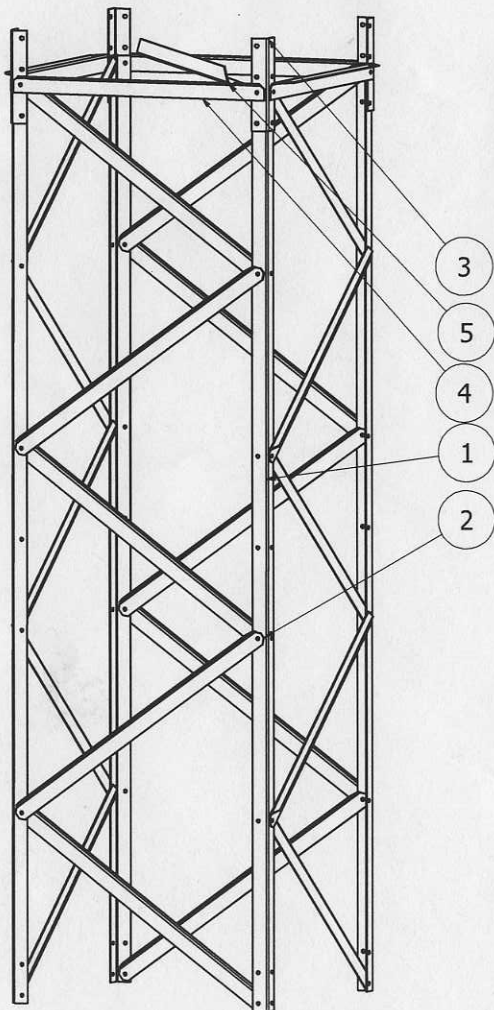
Make sure that on all four sides the Side Braces form W's all the way.

At the end of the sections all the side braces go on the inside to allow tower tie and tie braces to fit.

It is best to put all bolts out with nuts on the outside.

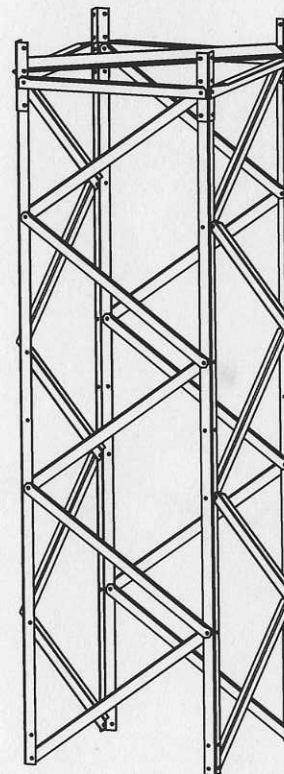
DRAWN	Rex A Greene	12/21/2005	Greene Welding and Hardware Inc.	
			Greene Galvanized Stairs	
			TITLE	217/375/4244
				www.greenebinstairs.com
			<b>IN-T00005</b>	
MFG			SIZE	DWG NO
APPROVED			C	T36361 Instructions
				REV
				SHEET 1 OF 2

Odd sections of a T36361 Tower



Parts List			
ITEM	QTY	PART NUMBER	DESCRIPTION
1	4	SR1010 Siderail	2" x 2" x 120" 10 ga angle
2	20	SB0036 side brace	1" x 2" x 42.25 10 ga angle
3	4	SS0010 Splice	2" x 2" x 12" 10 ga angle
4	4	TT0036 Tower Tie 36	2" X 2" X 35.5 10 ga angle
5	1	TB3636 Tie Brace 36	2" x 2" x 49.5" 10 ga angle

Even sections



DRAWN	12/21/2005	Greene Welding and Hardware Inc.	
Rex A Greene		Greene Galvanized Stairs	
		TITLE 217/375/4244	
		www.greeneinstairs.com	
MFG		SIZE	DWG NO
APPROVED		C	T36361 Instructions
		REV	
		SHEET 2 OF 2	