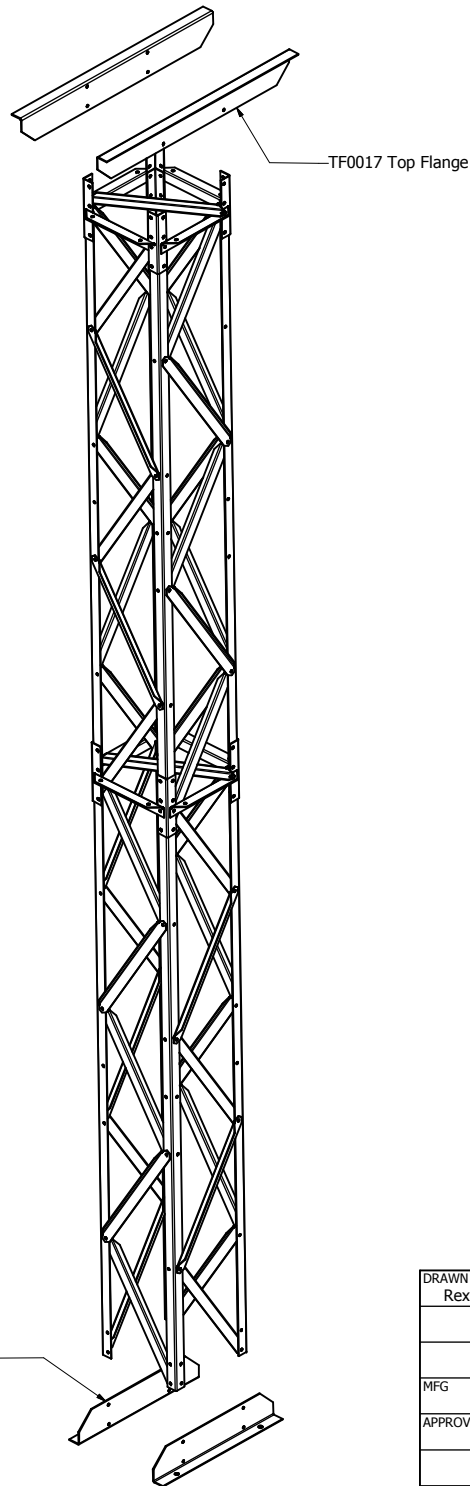


T17171 17 x 17 single brace tower

Make sure that on all four sides the Side Braces form W's all the way.

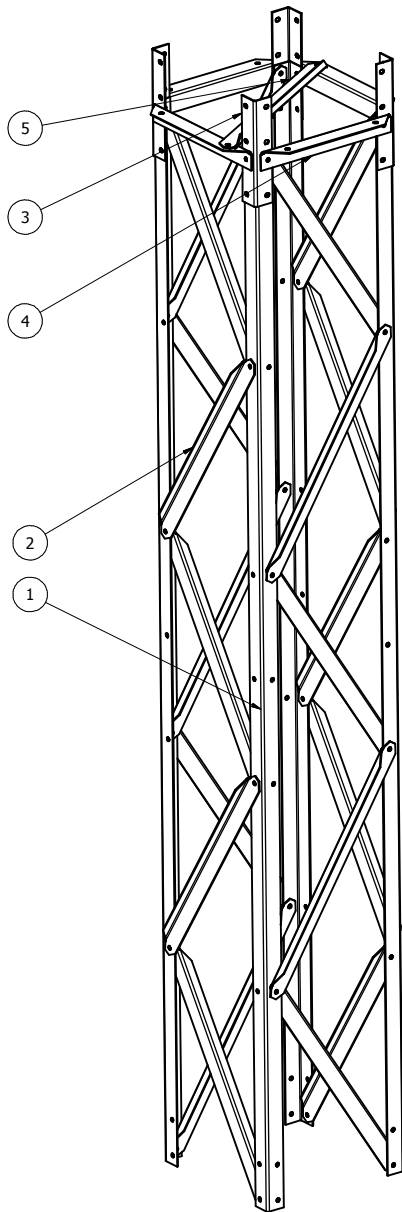
At the end of the sections all the side braces go on the inside to allow tower tie and tie braces to fit.

It is best to put all bolts out with the nuts on the outside.

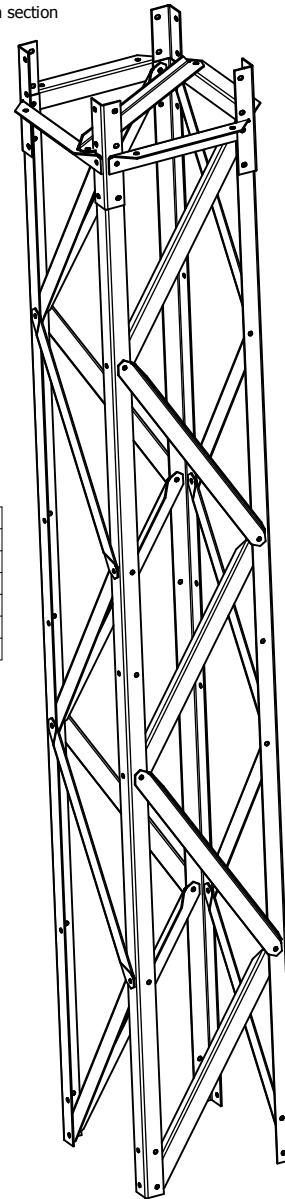


DRAWN Rex A Greene	2/8/2006	Greene Welding and Hardware Inc. Greene Galvanized Stairs 217/375/4244 www.greeneinstairs.com		
MFG		TITLE IN-T00001		
APPROVED		SIZE C	DWG NO T17171 Tower Ins	REV
		SHEET 1 OF 2		

T17171 Tower odd section



T17171 Tower even section



Parts List			
ITEM	QTY	PART NUMBER	DESCRIPTION
1	4	SR1010 Siderail	
2	20	SB0017 Side brace	
3	4	SS0010 Siderail splice	
4	4	TT0017 Tower Tie 17	
5	1	TB1717 Tower Brace 17 17	

DRAWN Rex A Greene		2/8/2006		Greene Welding and Hardware Inc. Greene Galvanized Stairs 217/375/4244 www.greeneinstairs.com	
MFG				TITLE	
APPROVED					
		SIZE C	DWG NO	REV	
		T17171 Tower Ins			
SHEET 2 OF 2					