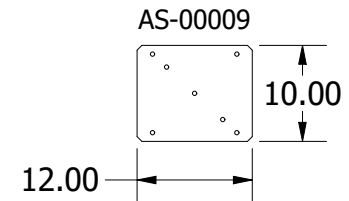
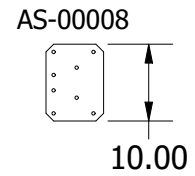
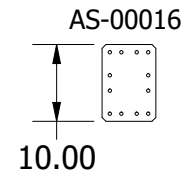
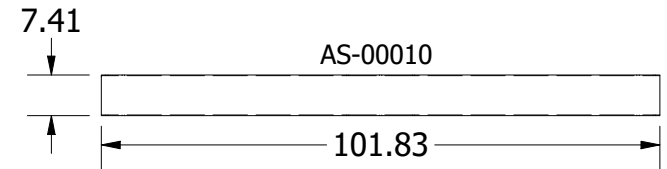
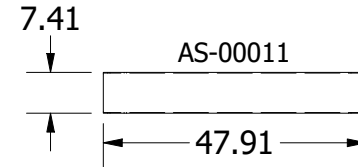
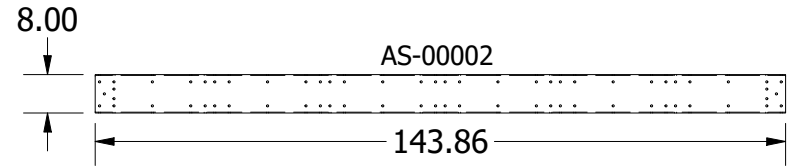
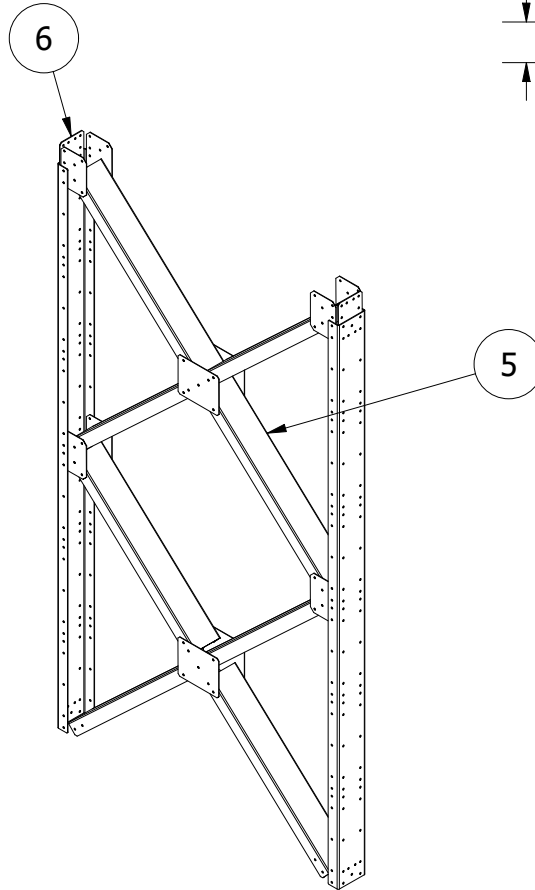
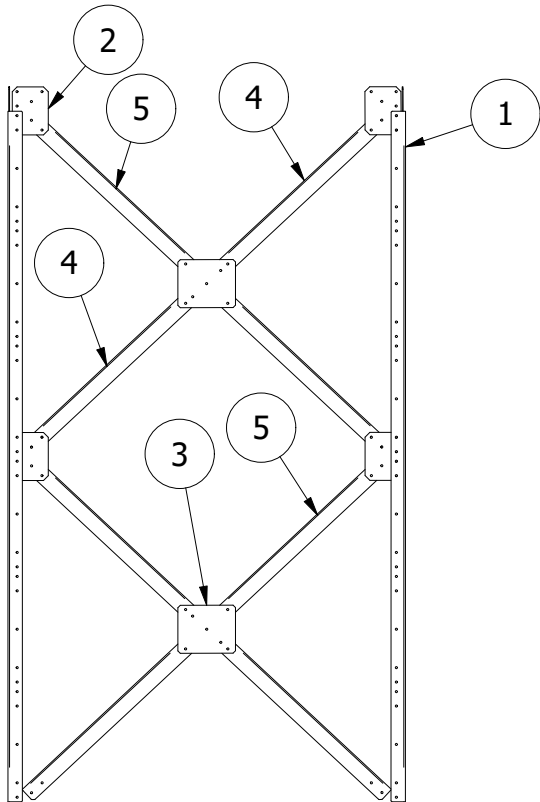
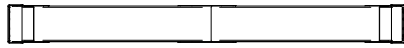


ATS0002 Non-Laminated 12' Tower Section - Parts List

PARTS LIST

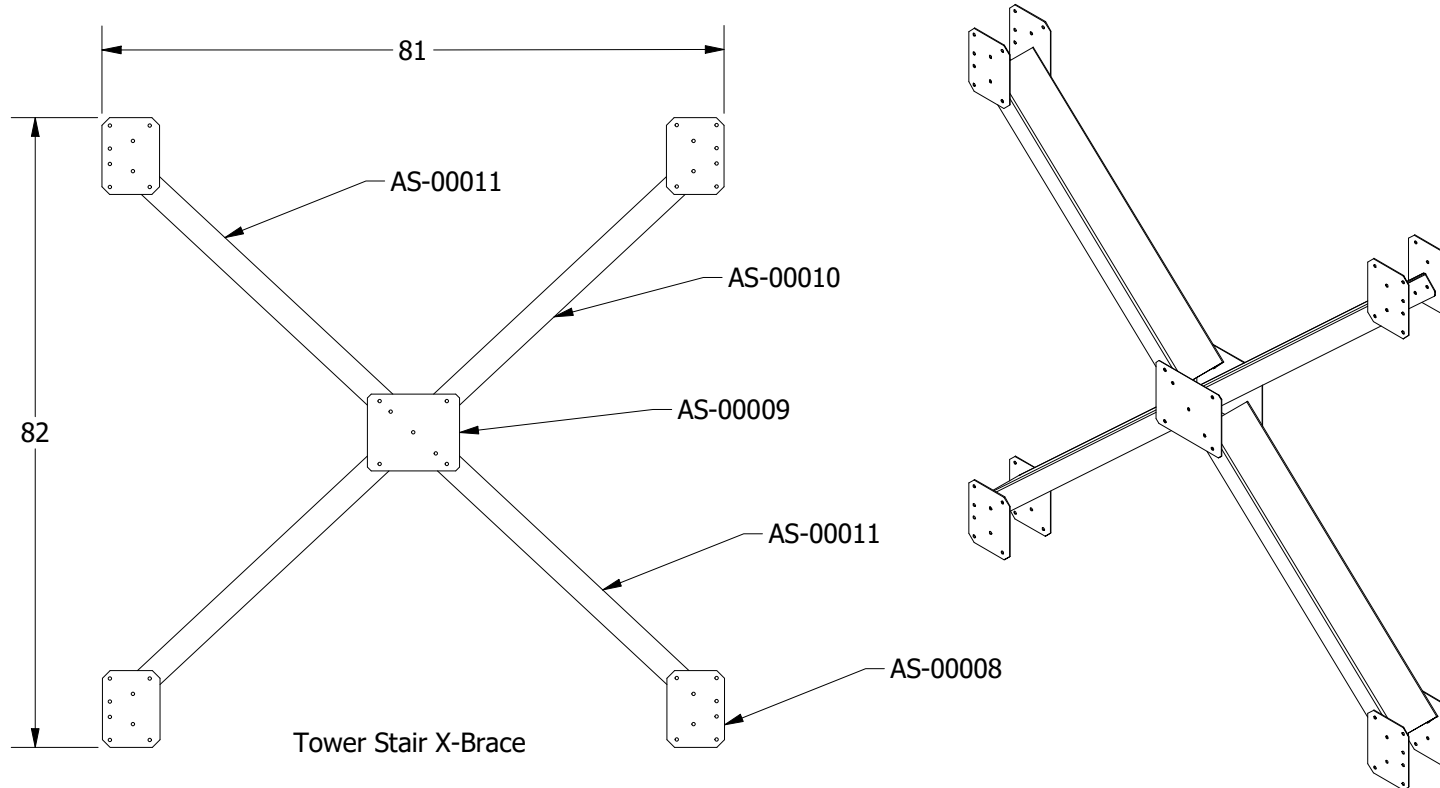
ITEM	QTY	PART NUMBER	DESCRIPTION
1	2	AS-00002	Channel 8 x 3 x .168 x144.ipt
2	12	AS-00008	Plate Leg Brace TS
3	4	AS-00009	Plate Center Tie
4	2	AS-00010	Channel Brace
5	4	AS-00011	Channel Diagonal
6	2	AS-00016	Web Splice Bracket
7	116	3/8-16x1SFB	3/8"-16 x 1" Flange Bolt
8	116	3/8-16SFN	3/8"-16 Whiz Lock Nut



Step 1

- A. Connect one (1) AS-00010 brace and two (2) AS-00011 braces to plate AS-00009 to form a Tower Stair X-Brace.
- B. Attach AS-00008 plates to corners of X-Brace as shown.

PARTS USED IN STEP 1		
PART NUMBER	DESCRIPTION	QTY
AS-00008	Plate Leg Brace TS	8
AS-00009	Plate Center Tie	2
AS-00010	Channel Brace	1
AS-00011	Channel Diagonal	2



Step 2

- A. Bolt two (2) Tower Stair X-Braces to the main tower legs (AS-00002) as shown.
- B. Bolt the two (2) AS-00016 plates to the top of the tower legs (AS-00002) as shown in Detail W.

PARTS USED IN STEP 2		
PART NUMBER	DESCRIPTION	QTY
AS-00002	Channel 8 x 3 x.168 x144.ipt	2
AS-00009	Plate Center Tie	2
AS-00010	Channel Brace	1
AS-00011	Channel Diagonal	2
AS-00016	Web Splice Bracket	2

