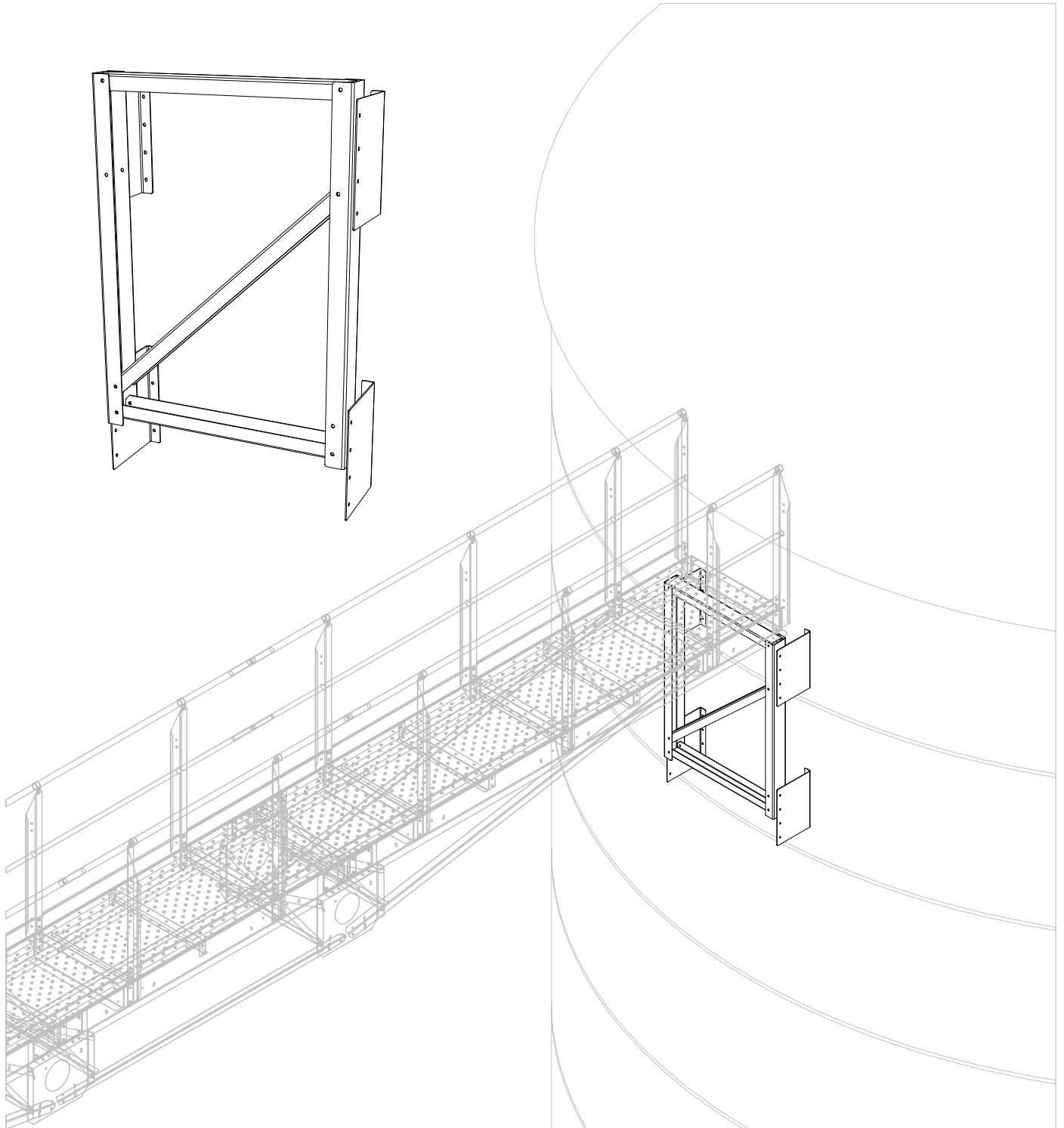
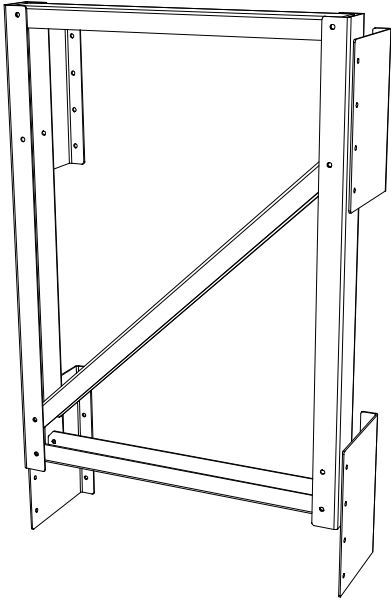


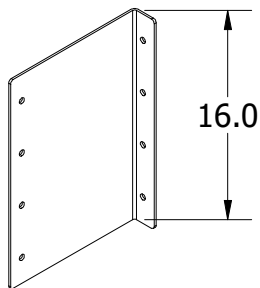
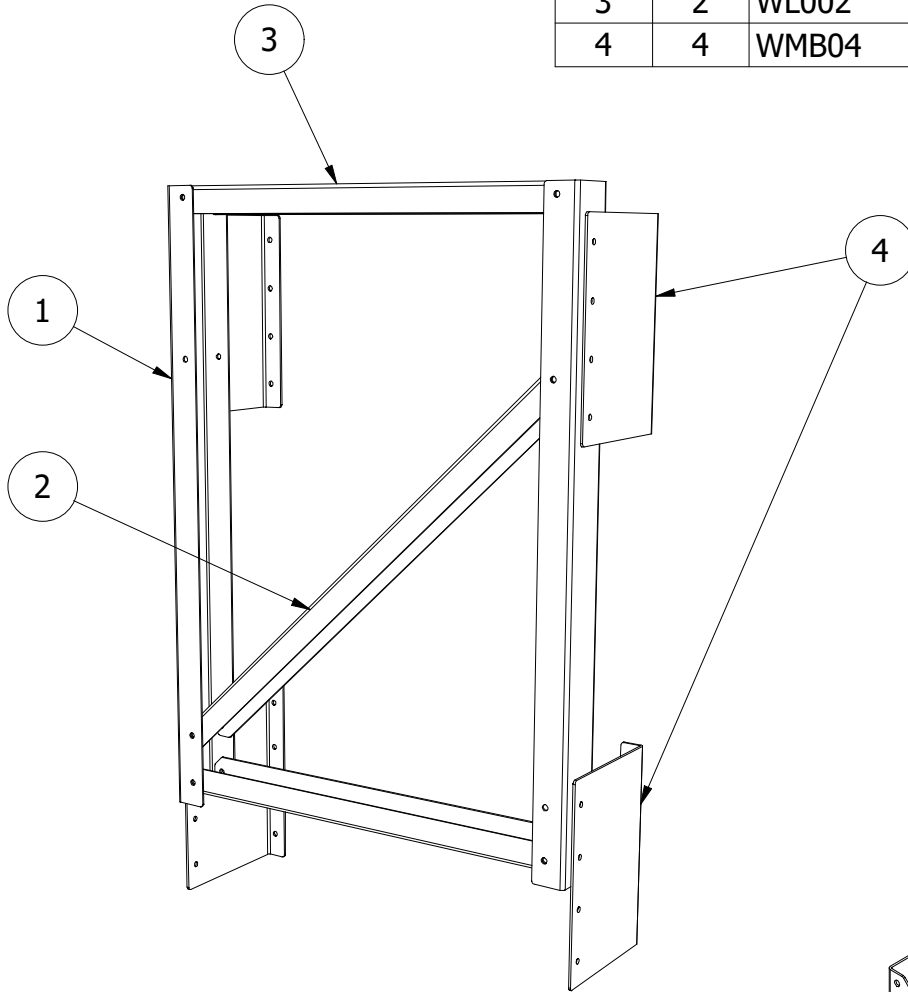
AMB15036 Manwalk Support

for Manwalks installed perpendicular to support structure

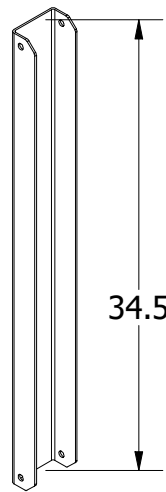


AMB15036 Parts

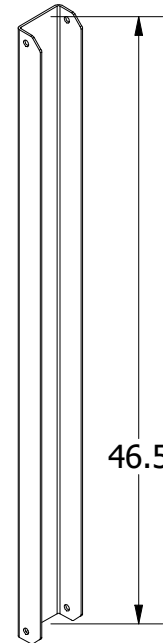
PARTS LIST			
ITEM	QTY	PART NUMBER	DESCRIPTION
1	2	WL050	Wall Loop 50" Siderail
2	1	WL003	Wall Loop Diagonal
3	2	WL002	Wall Loop Crossbar
4	4	WMB04	Wall Bracket, deep



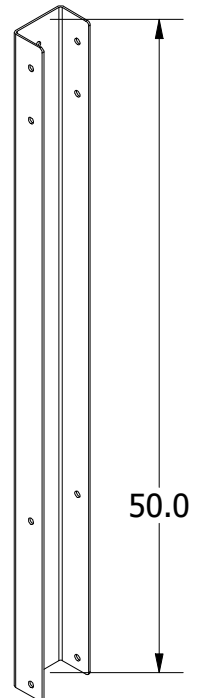
WMB04



WL002



WL003



WL050

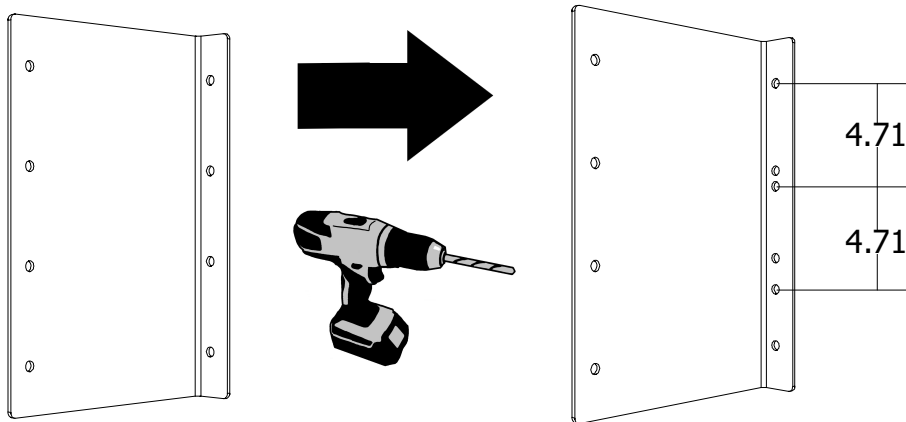
Vertical Bolt Spacing

Adapt AMB15036 components to required manufacturer standard

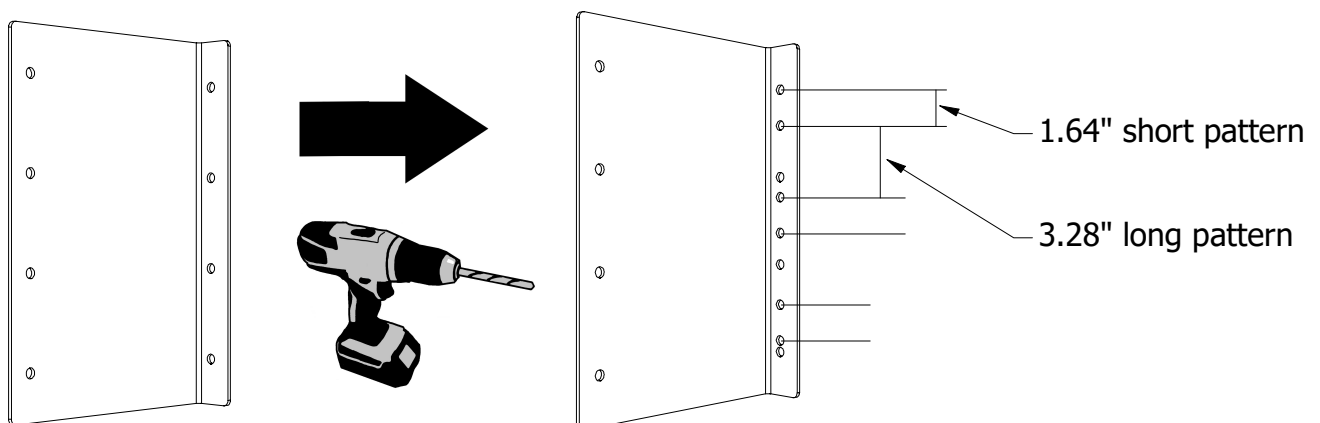
WMB04 wall brackets are manufactured with holes for 4" (wide corrugation) or 2.667" (narrow corrugation) standard vertical spacing. For installation on alternative styles, drill additional bolt holes on the narrow flange as shown.

Remember to make 2 left-handed and 2 right-handed (left-handed shown).

For use on 4.71" corrugation (Chief)

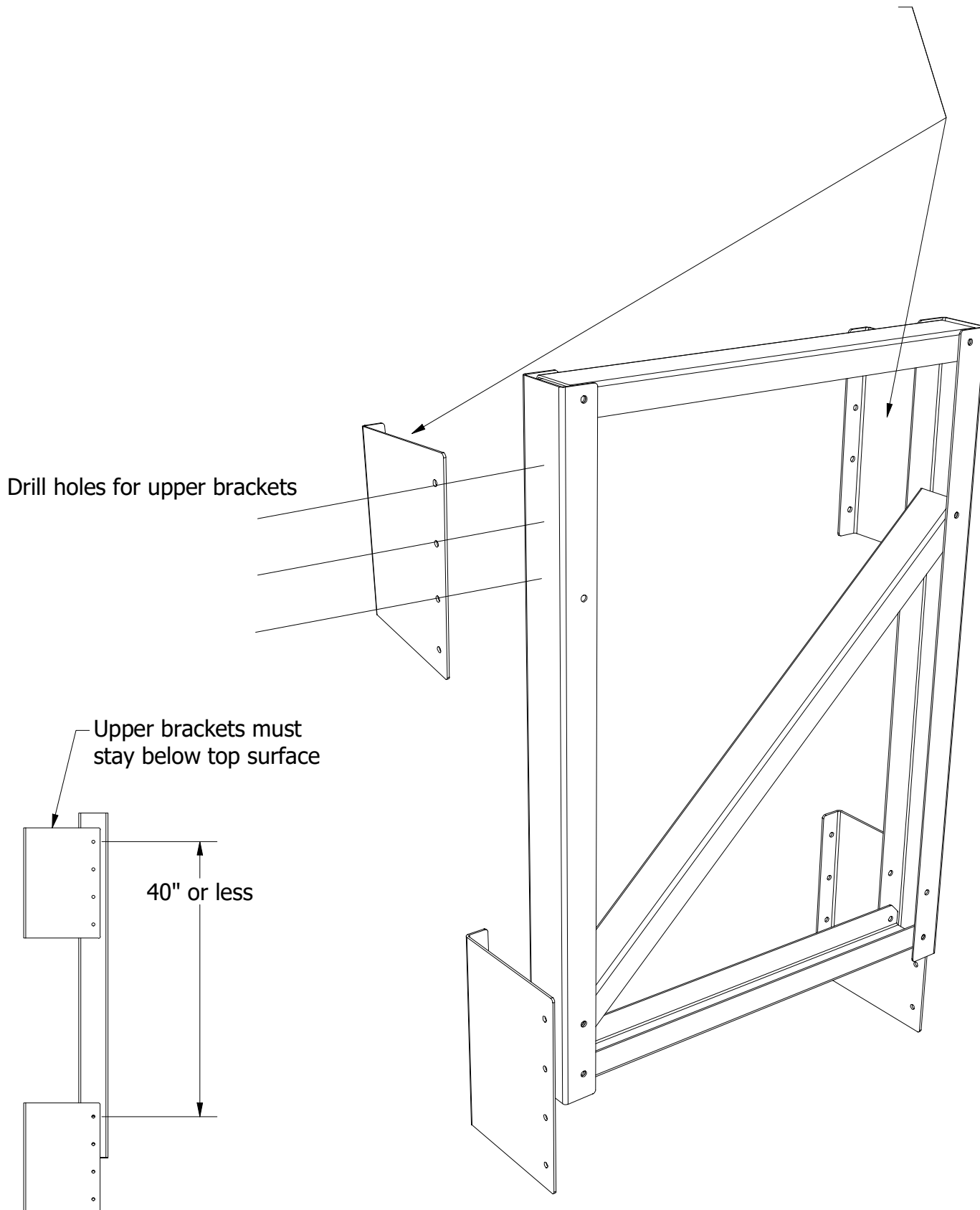


For use on 3.28" corrugation (Behlen)



Assemble Manwalk Support

Assemble the support as shown, attach the lower wall brackets to the pre-cut holes first. The upper wall brackets should be located according to the wall sheet that AMB15036 will be mounted to. Measure the desired spacing and drill mounting holes for the upper wall brackets as shown.



Attaching to Bin

Installation of the support can be new construction, or retrofit. The support can be mounted directly to the bin wall or in the stiffener valley as needed (stiffener option shown below).

