

4

3

2

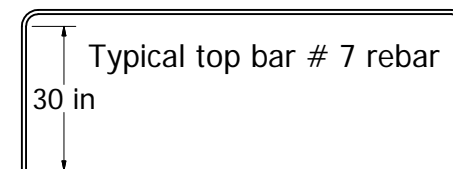
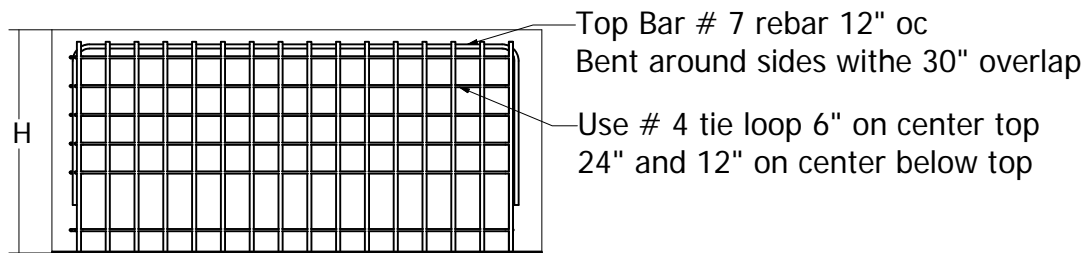
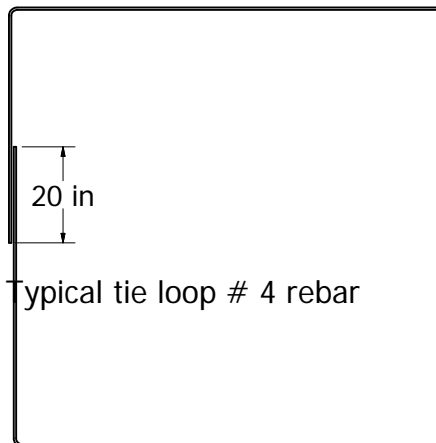
1

D

D

48" sq Tower
Based on 90mph winds 3 second gust.
ANSI/TIA/EIA-222-F "normal soil" conditions.

All rebar grade 60
Concrete 3000 psi

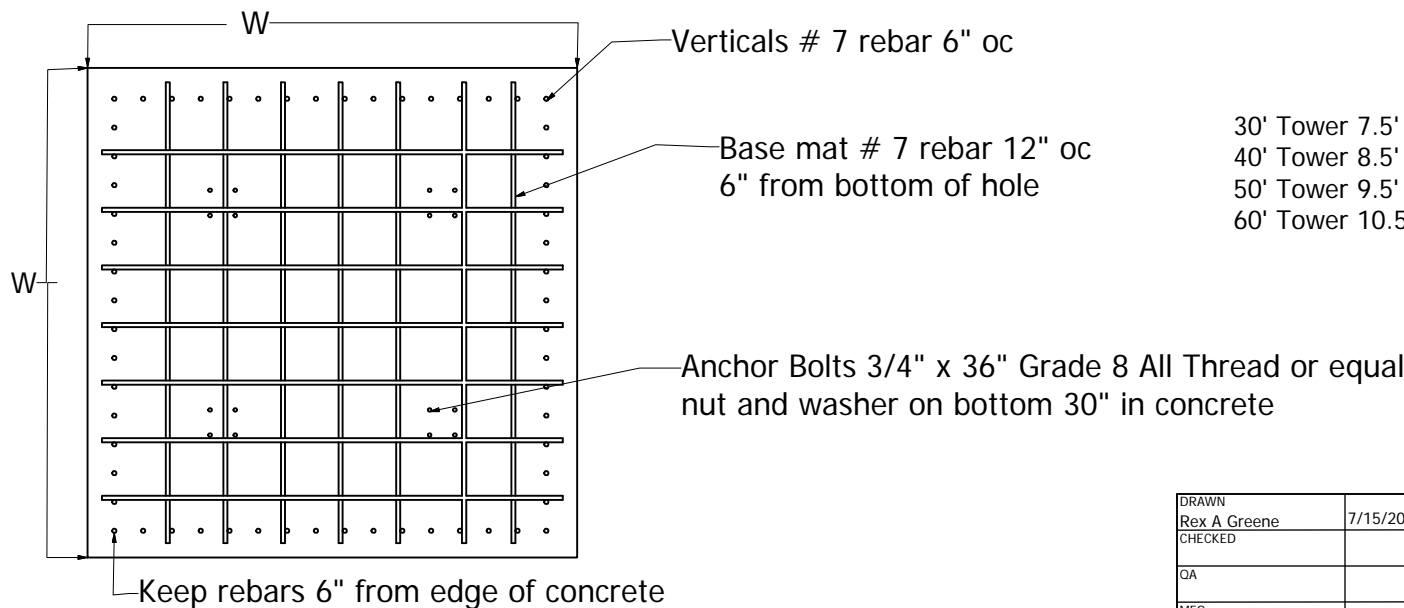


D

D

B

B



30' Tower 7.5' x 7.5' x 4' th
 40' Tower 8.5' x 8.5' x 4' th
 50' Tower 9.5' x 9.5' x 4' th or 7' x 7' x 8' th
 60' Tower 10.5' x 10.5' x 4' th or 7' x 7' x 9' th

A

A

DRAWN Rex A Greene		7/15/2005	Greene Welding and Hardware Inc.	
CHECKED			Greene Galvanized Stairs 217/375/4	
QA			www.greeneinstairs.com	
MFG			TITLE	
APPROVED			REV	
		SIZE C	DWG NO 8 5 x 8 5 ft foundation	REV
		SCALE NA	SHEET 1 OF 1	

4

3

4

2

1